

# II

## Tuba

Andante sostenuto e misterioso ♩ = 46

3 6

11 19 20 4

24 21 3 3

32 22 4

39 23 24 7 25 2

51 26 ♩=52

56 27 Tempo I ♩=46 sost.---- a tempo ♩=

61 28 3

65 3

68 29 piu sost. a tempo ♩=40

72 8 30 5 31 8

## Tuba

## III

Allegro con brio, ma non troppo mosso ♩ = 110

13 32 17 33 15

46 34 9 3 3

61 35 ♩=120 17 36 14

93 37 9

106 38 12 39 15 poco meno 5

138 40 Meno mosso ♩=70 A tempo ♩=110 4

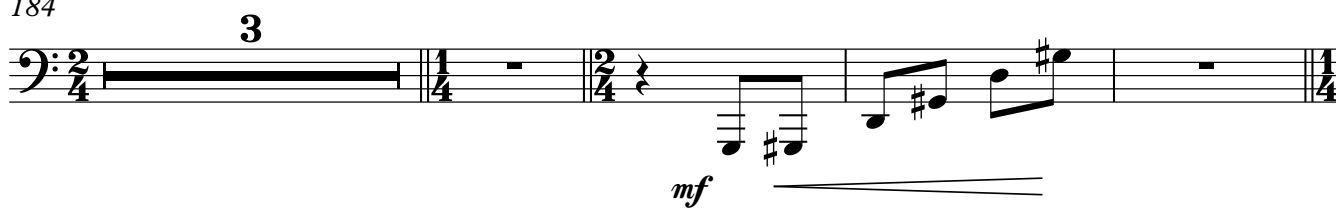
145 Meno mosso ♩=70 A tempo ♩=110 3

151 Meno mosso ♩=70 A tempo ♩=110 3

157 Meno mosso ♩=70 A tempo ♩=110 3

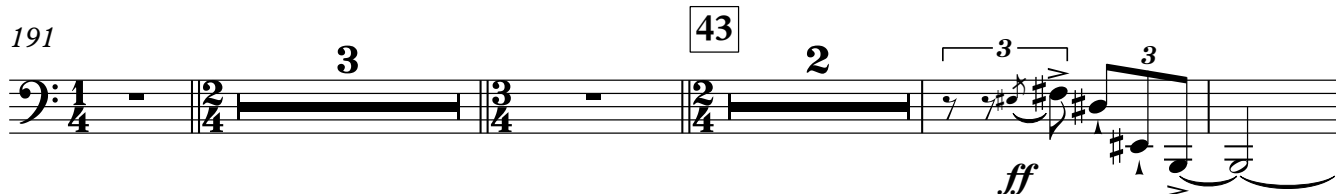
162 41 Meno mosso ♩=70 16 42 A tempo ♩=110 5

184

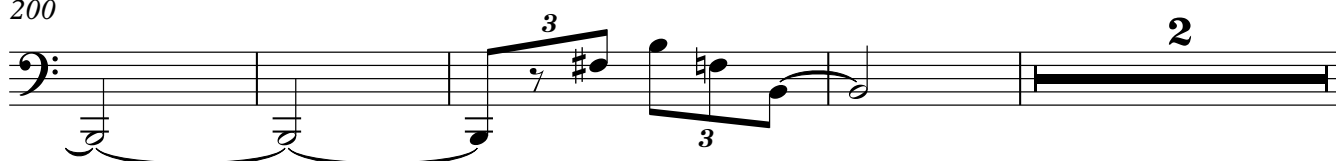


Meno mosso, rubato ♩=80

191



200



206

Tempo primo ♩=110

Meno mosso ♩=80

44

Tempo primo ♩=110



218

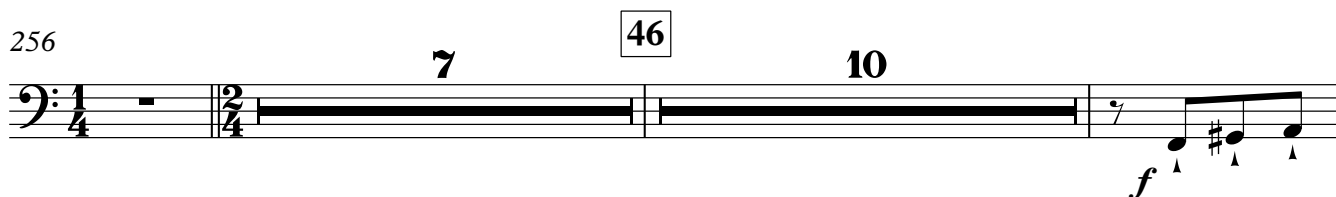


238

45



256



275

47

Meno mosso ♩=85

♩=80

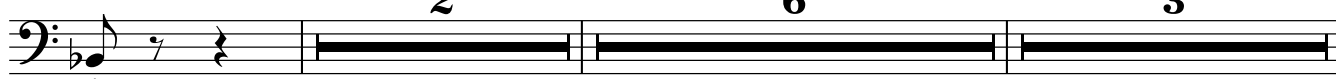
2

6

48

Ben moderato ♩=70

3



e - si - tan - do

esitando, poco accel. al Tempo I

animato ♩=110

poco a poco acceler.

287

49

10

50



309 **51** **con fuoco** ♩=120

**3**

*mp*

**3**

320 ♩=125

*mp*

**4**

329 **52** **Meno mosso** ♩=70

**3**

*f < sf* *f < sf* *f < sf*

335 **poco acceler. poco allarg. a tempo** ♩=70

**2**

*f < sf* *f < sf* *f < sf*

**3**

344 **piu animato** ♩=80 **53** ♩=100 **3** **2** ♩=110 **3**

*p*

353

363 **54** ♩=120

**2** **5**

*mp*

sub.meno mosso ♩=75 **poco a poco allarg.** **55** **molto meno mosso** **In 4** ♩=45

**2** **2** **largamente** ♩=50

*f*

**In 2** ♩=50

**2**

**3** **3**

4

Tuba

387 **56**

*ff* *ff* *ff* *sf* *sf* *sf* *sf*

395 **57****In 4** ♩=40

*sf* *sf* *sf* *sf* *sf* *sf* *sf* *sf*

403 **molto. allarg.**

*sf* *sf*